

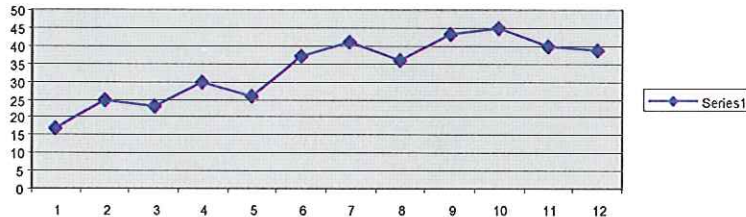
BELLIN HOSPITAL 2010 ANTIBIOGRAM

(Numbers Represent % Susceptible)

ORGANISM	# Isolates	Ampicillin/ Amoxicillin	Ampicillin/ Sulbactam	Cefazolin	Ceftazidime	Cefotaxime	Ceftriaxone	Ciprofloxacin	Clindamycin	Ertapenem	Gentamicin	Imipenem	Levofloxacin	Nitrofurantoin*	Oxacillin	Penicillin	Piperacillin/ Tazobactam	Tobramycin	Trimethoprim/ Sulfamethox	Vancomycin
Gram-Negative																				
Citrobacter freundii	16			0	75		69			100	100	100	100	94				100	94	
Escherichia coli	658	59	69	89	96		96			100	94	98	86	93			97	95	81	
Enterobacter cloacae	45			0	93		93			100	100	98	98	20			91	100	93	
Klebsiella oxytoca	25	0	84	60	100		100			100	100	100	100	44			100	100	100	
Klebsiella pneumoniae	121	0	93	95	98		98			100	198	100	97	31			92	99	97	
Proteus mirabilis	48	75	92	77	98		98			100	92		90	0			98	92	88	
Pseudomonas aeruginosa	88				99			73				92					97	98		
Serratia marcescens	11			0	100		100			100	100	91	100	0			100	100	92	
Gram-Positive																				
Streptococcus pneumoniae	10					89	89						100		50	70			85	100
Enterococcus faecalis	126													98		96				100
Staphylococcus aureus	388								78						61	3			100	100
Staphylococcus coagulase neg.	51								57						29	14			81	100

* Data for this antibiotic applies to urinary tract isolates only.

%METHICILLIN-RESISTANT STAPHYLOCOCCUS AUREUS



DRUG	APPROXIMATE ACQUISITION COST PER DOSE	USUAL ADULT DAILY DOSE	
Ampicillin	\$10.23	1 gm IV / IM q 6 hrs.	
Amp/Sulbactam 1.5 gm	\$4.87	1.5 gm IV q 6 hrs	
Aztreonam 1 gm	\$37.13	1 gm IV q 8 hrs	*
Penicillin 2.5 mU	\$2.45	2.5 mU IV q 4 hrs.	
Pip / Tazo 3.375 gm	\$19.37	3.375 gm IV q 6 hrs.	*
Nafcillin 1 gm	\$11.75	1 gm q IV 4-6 hrs.	
Cefazolin 1 gm	\$3.72	1 gm IV / IM q 8 hrs.	
Cefotetan 1 gm	\$13.47	1-2 gm IV q 6-8 hrs	
Ceftazidime 1 gm	\$5.14	1 gm IV / IM q 8 hrs.	*
Ceftriaxone 1 gm	\$5.72	1 gm q IV / IM 24 hrs.	
Levofloxacin 500 mg IV	\$13.91	500 mg IV q 24 hrs.	*
Gentamicin	\$2.04 80 mg vial	Dose varies depending on age, weight, renal function	*
Tobramycin	\$2.54 80 mg vial	Dose varies depending on age, weight, renal function	*
Clindamycin 900 mg IV	\$5.84	300-900 mg IV q 8 hrs.	
Imipenem/Cilastatin	\$34.23	500 mg IV q 6-8 hrs.	*
Vancomycin	\$6.10	1 gm IV q 12 hrs.	*
Nitrofurantoin	\$0.35 cap (Macrobid)	100 mg po bid	

* Dose may need to be adjusted in patients with renal impairment.
Contact pharmacist for more information.

1/17/06 Revised 3/4/11
10-6558.a

2010

ANTIBIOGRAM



bellinhealth